

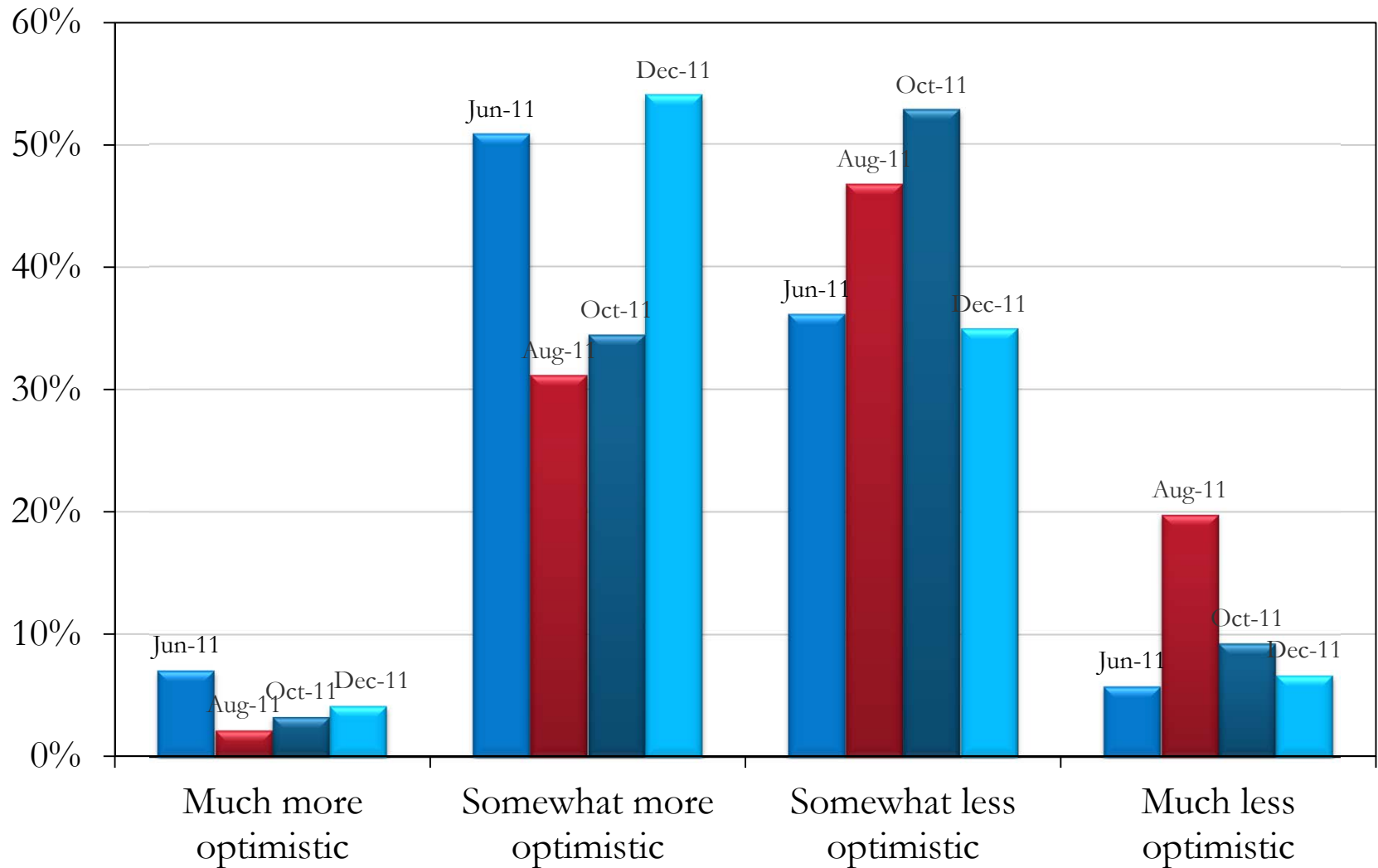
## Results of *Plastics Technology* “Processor’s Pulse Survey”

June 2011—December 2011



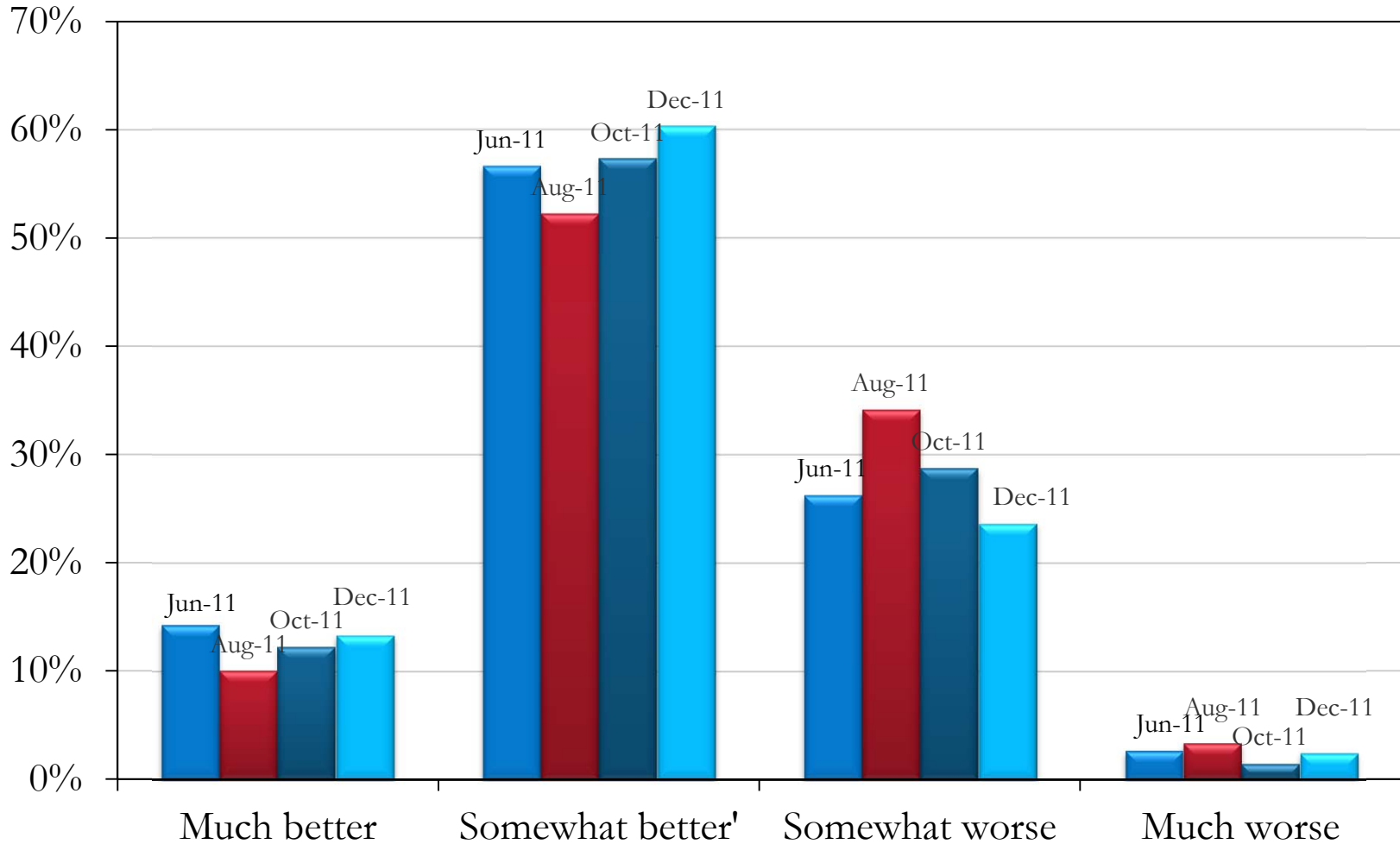
# Processor's Pulse Survey

In the past month, what are your feelings about the general economy?



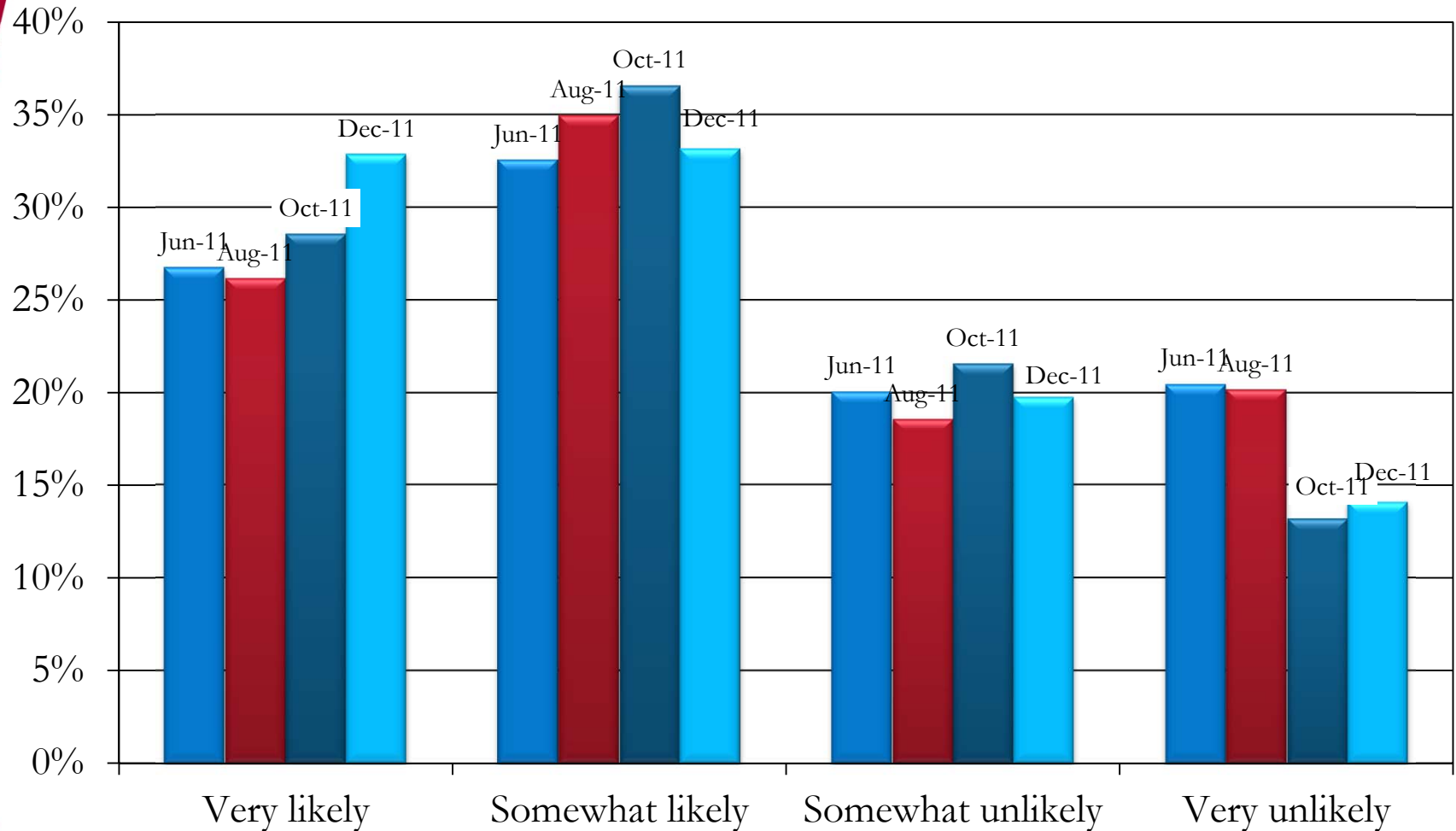
# Processor's Pulse Survey

## What about your business?



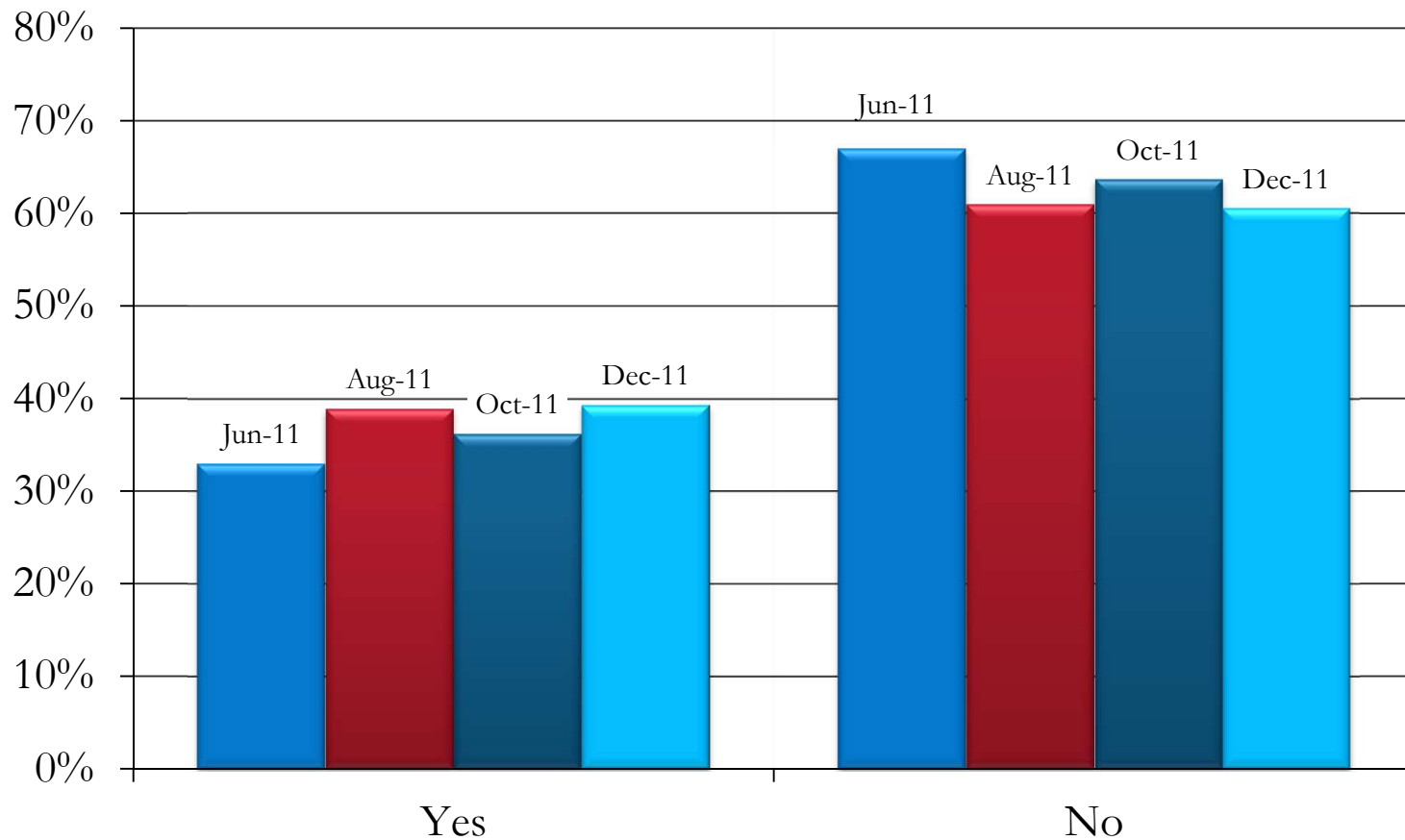
# Processor's Pulse Survey

What is the likelihood you will buy capital equipment in the next 12 months?



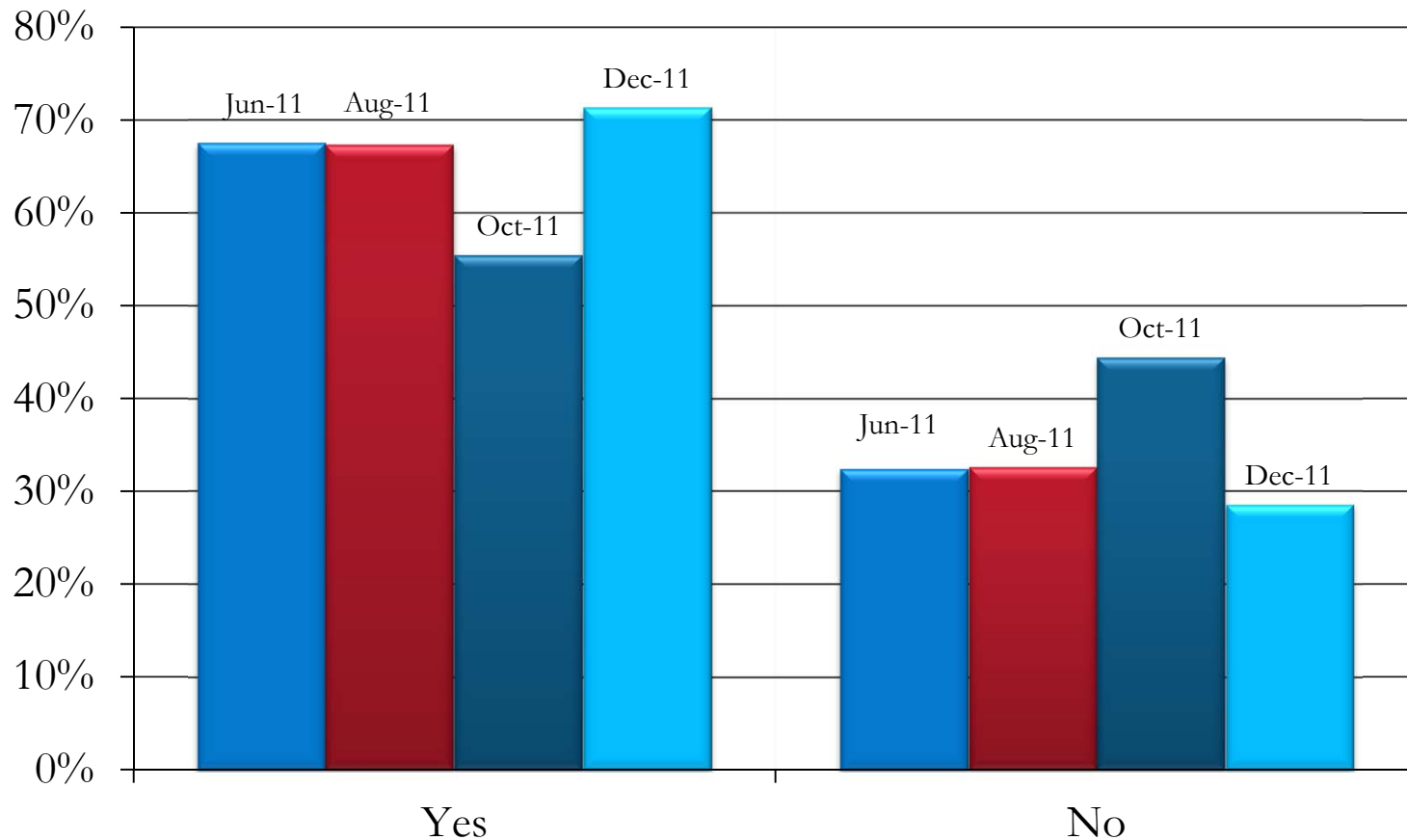
# Processor's Pulse Survey

Do you plan to attend NPE?



# Processor's Pulse Survey

If yes, will your visit to NPE influence the machinery and equipment you plan to purchase in 2012?



Thank You!

For more *Plastics Technology*  
Research, visit

[www.gardnerweb.com/reports.html](http://www.gardnerweb.com/reports.html)

